

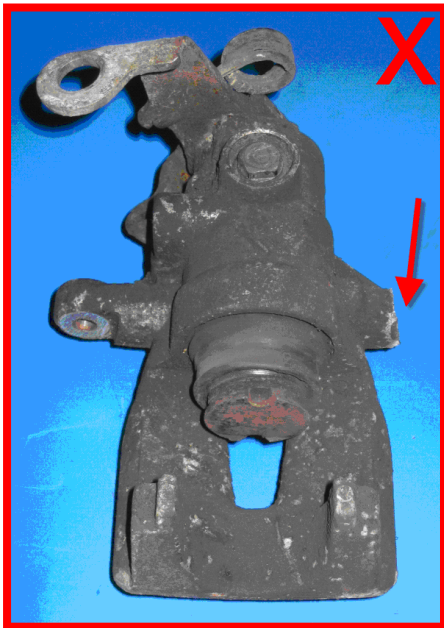
# Brake Caliper



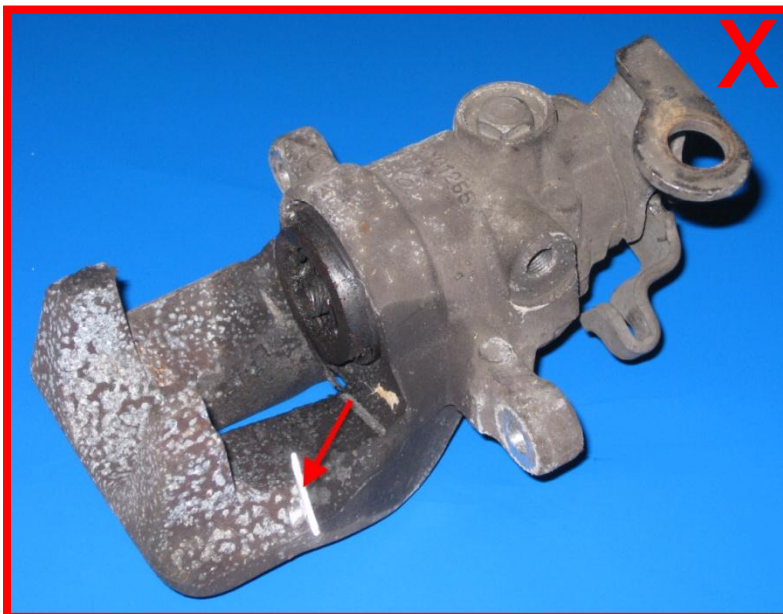
## Criteria:

- mechanical damage
- not identifiable / Back in Box

**Criterion: mechanical damage**



Casting/housing damaged. Partly broken off → not acceptable



Cuts, Cracks, etc.

→ not acceptable

### Criterion: not identifiable



Brake caliper "Back in Box"



Label covered / damaged / missing  
→ not acceptable