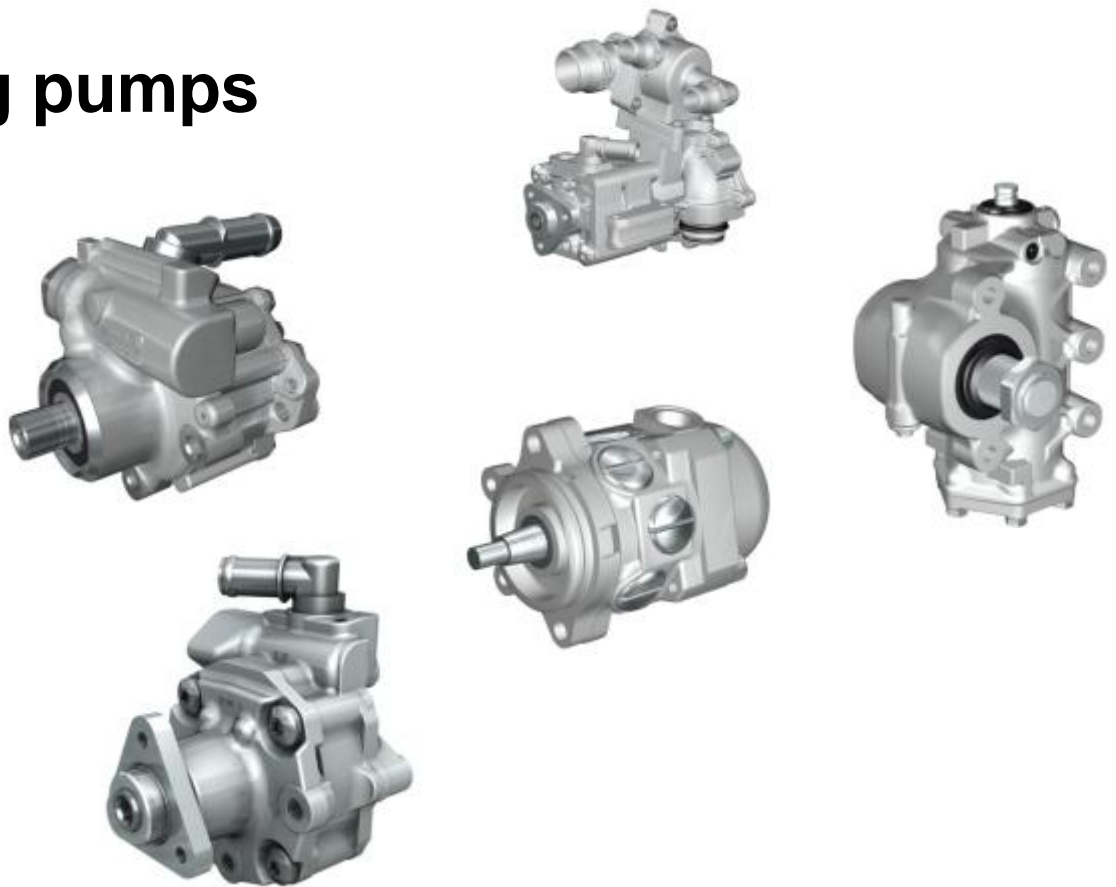


Steering pumps



Criteria:

- dismantled / incomplete
- mechanical damage
- corrosion
- not identifiable

Criterion: dismantled / incomplete



Pump dismantled → not acceptable

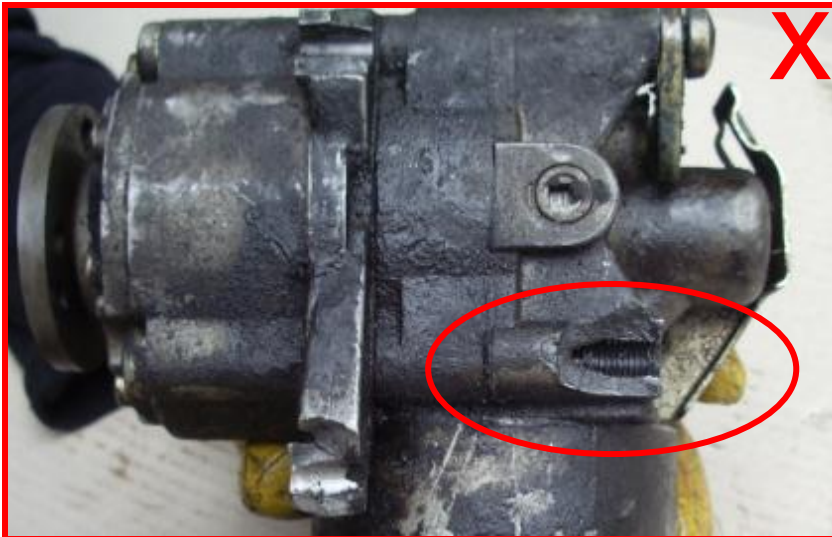


Pump incomplete → not acceptable

Criterion: mechanical damage



broken housing → not acceptable

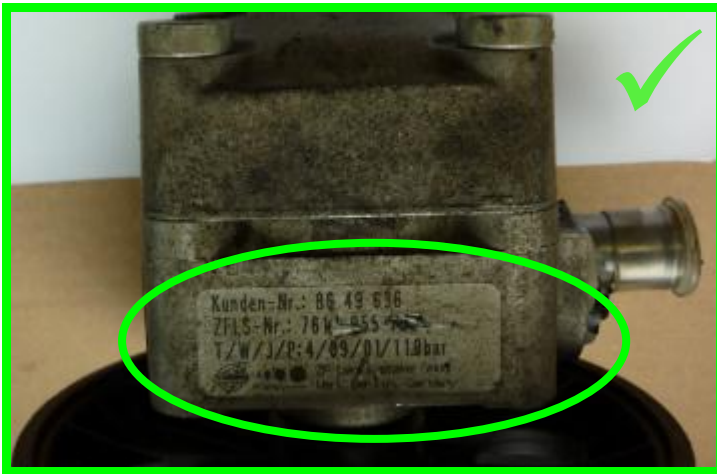


Criterion: corrosion



corrosion → not acceptable

Criterion: not identifiable



with original label → acceptable



without original label → not acceptable