

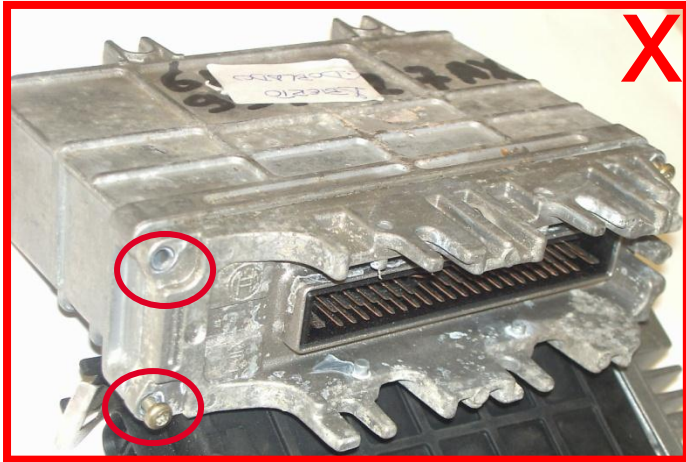
# Control Unit



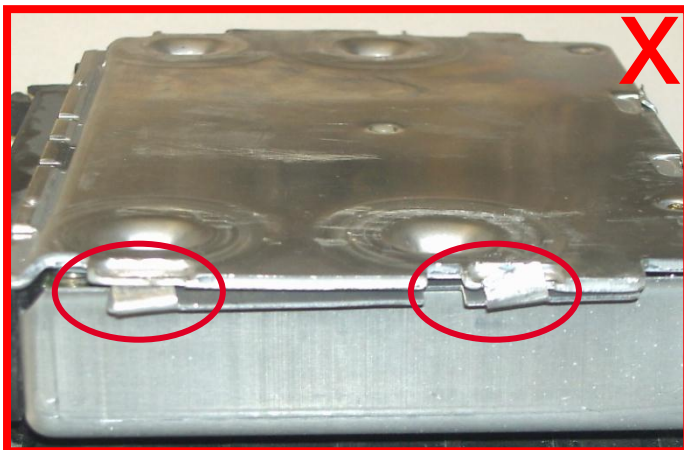
## Criteria:

- dismantled / incomplete
- mechanical damage
- blooming on housing, plug or pins
- corrosion
- not identifiable

**Criterion: dismantled / incomplete (housing open)**



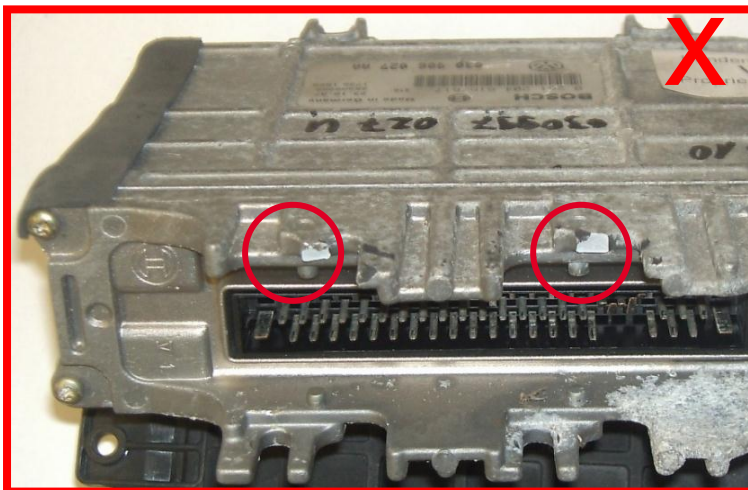
Housing bended open and /or  
pressed shut again  
→ not acceptable



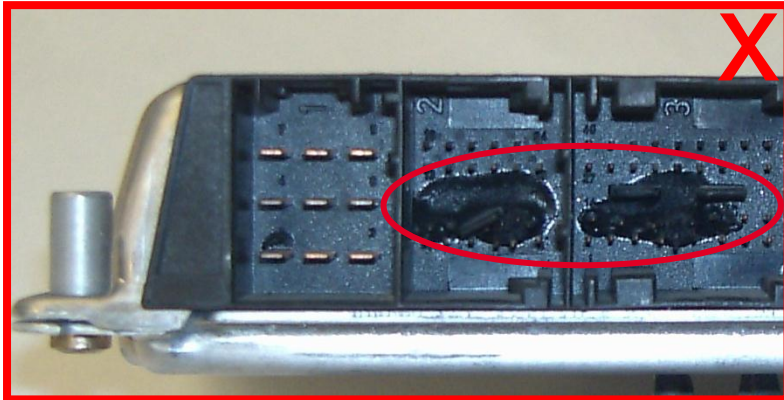
### Criterion: mechanical damage



damage on housing / plug strip deformed or burned  
→ not acceptable



**Criterion: blooming on housing / plugs / pins**



No blooming on housing, plug or pins → not acceptable

