

Starter



Criteria:

- dismantled / incomplete
- mechanical damage
- corrosion
- discoloration of axis due to overheating
- not identifiable

Criterion: dismantled / incomplete



Starter dismantled
→not acceptable

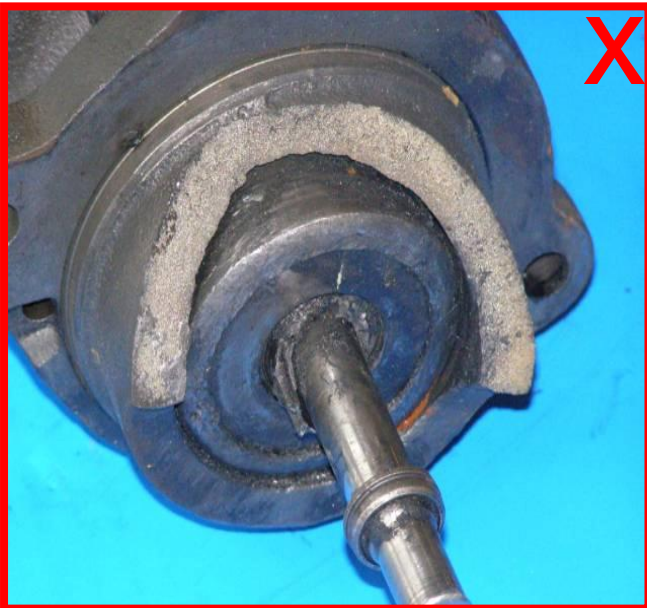


Starter incomplete
→not acceptable

Criterion: mechanical damage



Starter deformed → not acceptable



broken housing → not acceptable

Criterion: corrosion



corrosion on surface without
material removal
→ acceptable



corrosion with material removal
→ not acceptable

Criterion: discoloration of axis due to overheating



discoloration of axis
→ not acceptable